

RE20 Animal Endotracheal Intubation Kit

ESVI VETOLABO

The RE20 Animal Endotracheal Intubation Kit is an experimental tool for non-invasive and visual endotracheal intubation of rodents under the guidance of fiber optic. Compared with the traditional endotracheal intubation methods (blind intubation, tracheotomy, direct vision intubation, etc.), the RE20 set has an angle adjustable a endotracheal intubation stand and an optical fiber lighting system with adjustable brightness, which can effectively avoid animal damage, low success rate and other problems caused by experimental operation, and improve the efficiency and accuracy of experimental results. In addition to mechanical ventilation, the Endotracheal Intubation Kit can also be used for respiratory function testing, lung administration, pneumonia modeling, thoracotomy, myocardial infarction modeling and other scenarios.

Components



Rat and mouse endotracheal intubation stand



Rat endotracheal intubation tube



Mouse endotracheal intubation tube



Endotracheal intubation fiber optic lighting kit



Tracheoscope mirror



Silk yarn for teeth bar

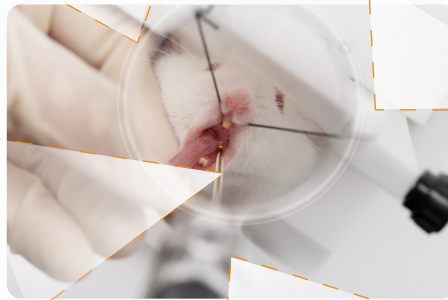


Tweezer

Features

Humanized auxiliary equipment:

Tracheoscope mirror assisted localization;
Tracheoscope confirms whether the intubation is successful, effectively improving the experimental efficiency



Flexible adjustable endotracheal intubation stand:

0~180° is adjustable, and any angle can be kept stable, meeting various operation scenarios; After the intubation is completed, the ventilator can be connected for subsequent experiments without moving the animals to avoid secondary injury



Endotracheal tube:

Moderate softness and hardness, no harm to animal trachea; A variety of specifications can be selected to meet the intubation needs of rodents with different volumes



Wireless fiber optic lighting system:

The light source is adjustable in three positions, which can display the position of the intubation nozzle and guide the tracheal intubation accurately; Cold light source will not cause heat source burns to animals, and the light is soft and friendly to human eyes

Order Information

Category	Product Name	Specification	Model	Description
Kit	Rat Endotracheal Intubation Kit	/	RE20-R	Including 1 box of endotracheal tubes (14G×5, 16G×5), 1 rat endotracheal intubation stand, 2 surgical instruments (1 straight tweezer, 1 bent tweezer), 1 set of wireless fiber optic lighting system, 1 tracheoscope mirror and 1 pack of silk yarn for teeth bar.
	Mouse Endotracheal Intubation Kit	/	RE20-M	Including 1 box of endotracheal tubes (18G×5, 20G×5), 1 mouse endotracheal intubation stand, 2 surgical instruments (1 straight tweezer, 1 bent tweezer), 1 set of wireless fiber optic lighting system, 1 tracheoscope mirror and 1 pack of silk yarn for teeth bar.
Stand	Rat Endotracheal Intubation Stand	1pcs/pkg	RE20-1R	Use with the silk yarn for teeth bar to fix the rat/mouse
	Mouse Endotracheal Intubation Stand	1pcs/pkg	RE20-1M	
Endotracheal Tube	Rat Endotracheal Intubation Tube(>300g)	10pcs/pkg	RE20-2BR	14G, recommended for rat weighing ≥ 300g
	Rat Endotracheal Intubation Tube(<300g)	10pcs/pkg	RE20-2SR	16G, recommended for rat weighing < 300g
	Mouse Endotracheal Intubation Tube(≥35g)	10pcs/pkg	RE20-2M	18G, recommended for mouse weighing ≥ 35g
	Mouse Endotracheal Intubation Tube(<35g)	10pcs/pkg	RE20-2SM	20G, recommended for mouse weighing < 35g
Others	Wireless Fiber Optic Lighting System	/	RE20-3	Including 1 lighting device, 2 optical fibers (one for rat and mouse), 1 intubation magnifying glass, 1 tracheoscope mirror, and 1 set of charging device; Used to guide endotracheal intubation
	Tracheoscope Mirror	1pcs/pkg	RE20-4	Check whether endotracheal intubation is successful